

# TU-604CI

Multi-Tuner

# DENON

**Expandable 6 Source Multi-Tuner.**

**Dual Independent AM/FM tuners pre-installed with expansion slots for up to 4 optional tuner cards.**



## Features

### Configurable Multi-tuner

- Dual AM/FM tuners pre-installed
- 6 independent audio outputs (simultaneous output available)
- Independent 56 stations memory for each tuner
- Independent control for all six tuners
- Auto preset function
- Preset skip
- Station rename
- Front panel and IR lock mode

### Plug n' Play upgrade

- 4 expandable slots
- Simple upgrade
- Optional tuner cards will be available

### Ethernet IP control

- WEB remote control and setup
- Firmware update via Ethernet

### System control

- AMX, Crestron third party IP control support with RS-232C port
- Remote in / out IR control
- Web control via Ethernet
- Seven +12V, 250mA trigger outputs

### Optional Tuner Card

- ACD-DAB DAB tuner card
- ACD-AMFM Analog AM/FM tuner card



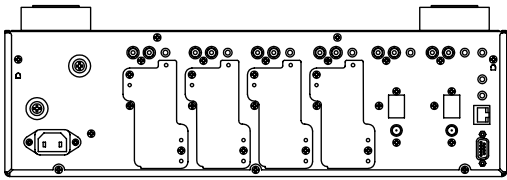
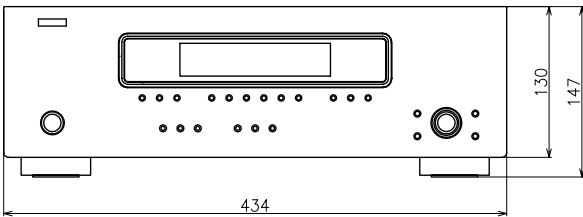
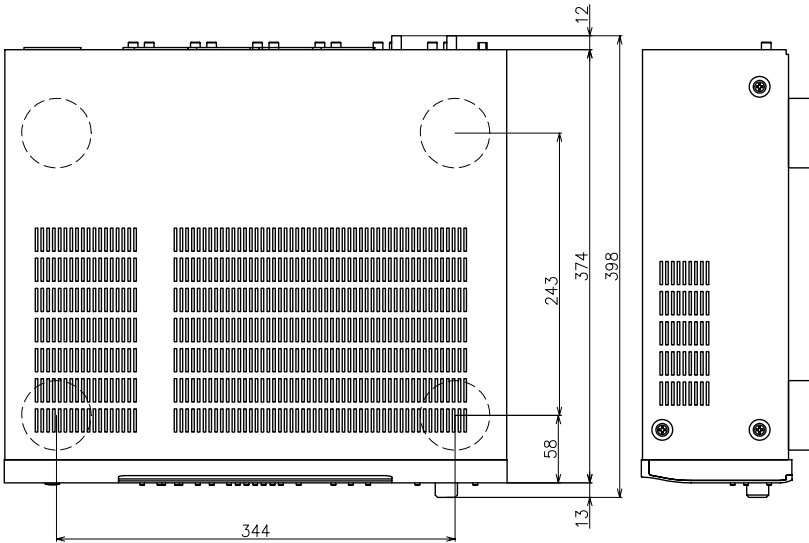


Figure below shows the TU-604CI without any optional boards.

- With Optional Board ACD-AM/FM W434 x H147 x D400
- With Optional Board ACD-DAB W434 x H147 x D406



#### Input / Output terminals

Tuner	FM coax 75 ohms antenna	2
	AM antenna	2
	Tuner option slot (Tuner 3 to 6)	4
OUT	Analog audio	2 (max. 6, with Tuner option slot)
	Others	
	Ethernet	1
	RS-232C	1
	Remote In/Out	1 / 1
	Trigger Out	6 (Tuner 1 to Tuner 6)
	Trigger Out	1 (Master)

#### Main Specifications

##### Tuner (FM/AM) section

Receiving range (FM)	87.50 MHz - 108.00 MHz
Usable sensitivity (FM)	1.0 $\mu$ V (11.2 dBf)
Receiving range (AM)	522 kHz - 1611 kHz
Usable sensitivity (AM)	18 $\mu$ V
50 dB Quieting sensitivity	MONO: 1.6 $\mu$ V (15.3 dBf)
	STEREO: 23 $\mu$ V (38.5 dBf)
S/N (IHF-A)	MONO: 77 dB
	STEREO: 72 dB
Total Harmonic Distortion (at 1 kHz)	MONO: 0.15 %
	STEREO: 0.3 %

##### General

Power supply	AC 230 V, 50 Hz
Power consumption	85 W
	(Standby: 0.3 W)
Dimensions W x H x D	434 x 147 x 398 mm
Weight	9.4 kg

#### Optional Tuner Module

##### ACD-DAB DAB Tuner Module



Frequency range	174.928 (5A) - 239.200 (13F) MHz (BAND III) 1452.960 (LA) - 1490.624 (LW) MHz (L-BAND)
Sensitivity	-98 dBm (BAND III) -94 dBm (L-BAND)
S/N	90 dB (IHF-A weighted) STEREO: 72 dB
THD+N	0.008 % (1 kHz)
Channel separation	85 dB (1 kHz)
Frequency response	+0.5/-0.5 dB (20 Hz - 20 kHz)
Aerial terminal	75 ohms, F female

##### ACD-AMFM FM/AM Tuner Module



\*Design and specifications are subject to change without notice.

