

AVR-2310

AV Surround Receiver

DENON

AV Surround Receiver featuring Dolby TrueHD, DTS-HD Master Audio and Multi Room functionality that enhances your level of entertainment enjoyment.

The AVR-2310 is a versatile AV surround receiver with a 7.1-channel surround amp that supports Dolby TrueHD and DTS-HD Master Audio decoding. The AVR-2310 provides a Graphical User Interface (GUI) that lets you check the unit's status in color for easier operation. The AVR-2310 is also endowed with a variety of Denon technologies such as Direct Mechanical Ground Construction and Minimum Signal Paths for faithful reproduction of HD sound and HD picture quality.



Features

Key Features

- **HDMI full compatibility**
 - 5 x HDMI inputs
 - HDMI one cable connection to your HDTV
 - Dolby TrueHD and DTS-HD master audio decoder
 - GUI
- **High bit i/p converter and scaler up to 1080p**
 - Multi cadence detection for SD and HD video signal
 - Digital noise reduction and enhancer
- **Dolby Pro Logic Iiz**

State-of-the-art Denon Solutions for Maximising Content Quality

- Identical quality and power for all 7 channels, 105 W x 7ch
- Stable power supply for high-quality sound and picture playback
- Compressed Audio Restorer to enhance digital music files
- Dolby TrueHD and DTS-HD Master Audio decoders
- Denon's high picture quality circuitry
- Video digital noise reduction, to optimise effects for both SD and HD content
- Bi-amp capability

Connectivity & Future-ready Expandability

- 2 source / 2 zone capability
- Power amplifier, assign for zone 2
- Sleep timer function

Ease-of-use

- On-Board GUI, Superimposed on HDMI (up to 1080p)
- Audyssey Dynamic Volume, for real-time volume adjustment
- Audyssey Dynamic EQ selects the correct frequency response and surround volume levels on a moment by moment
- Audyssey MultEQ Auto setup and Room EQ
- 2-line fluorescent display on front panel
- Three Quick Select Buttons
- Pre memory remote control unit

State-of-the-art Denon Solutions for Maximising Content Quality

• Support for new surround extension

By assigning 7 channels of power from the AVR-2310's built-in power amp to individual channels, you can create and enjoy your own custom surround mode.

-Dolby Pro Logic IIz processing

Dolby Pro Logic IIz introduces a new dimension to home theatre entertainment through the addition of a pair of front height channels. Compatible with stereo, 5.1 and 7.1 content, Dolby Pro Logic IIz provides enhanced spaciousness, depth and dimension to movies, concert video and video game playback while maintaining the full integrity of the source mix.

• High-bit I/P Converter and Scaler up to 1080p

The AVR-2310 uses a high-performance video up-scaler to convert SD (standard definition) video material to HD (high definition) quality. This means that the 480i/480p (SD-quality) video signals of DVD programs and other material are converted to the high-quality 1080p signal of HD video, and output to the HDMI port. The fuzziness in the details of SD video is removed to produce a clear picture. Now you can enjoy not only your DVDs but also your VCR tapes and games with much greater clarity and detail.

• Analog to HDMI up-conversion, I/P converter and scaler on HDMI to HDMI

Analog video input signals (composite, S-video, component) are converted to digital video signals and transmitted to the HDMI output port. Digital video signals are sent to HDMI output even when multiple HDMI devices such as a video camera or a game console are connected to the AVR-2310. One HDMI cable is all that's needed to connect the AVR-2310 to a TV (monitor).

• Minimum Signal Path for clear audio and video signal

• Direct Mechanical Ground Construction, embodying concepts for thorough vibration resistance

• Digital / analog separate windings

• Compressed Audio Restorer to enhance digital music files

• Pure Direct function

Connectivity & Future-ready Expandability

• Network Audio/Photo Ready (optional ASD-3N/3W)

• iPod Audio/Photo and Video playback (optional ASD-11R/3N/3W)

• 2way remote ready (optional: Denon RC-7000CI/RC-7001RCI)

Ease-of-use

• On-Board GUI via HDMI output

The AVR-2310 is equipped with an easy-to-view Graphical User Interface (GUI) featuring visual menu displays. These menu displays can also be output to the monitor over HDMI.

• Audyssey Dynamic Volume, for real-time volume adjustment

Audyssey Dynamic Volume constantly monitors the sound sources and adjusts the volume to the optimum level for the particular source being heard without sacrific-

ing dynamic range. The AVR-2310 is also equipped with Audyssey MultEQ which measures the acoustic characteristics of the room to obtain the optimum acoustic effects, and Dynamic EQ which reproduces the high and low range with the optimum acoustic effect during low volume levels. Dynamic Volume combines these two functions to achieve maximum performance.

• MultEQ Auto setup and Room EQ

-Tower type microphone for more accurate measuring

-Up to six measurement points

-High level resolution filters for satellite speakers and also subwoofer

• Auto surround mode

• Audio level memory, capable of correcting different signal levels for each input device

• Variable subwoofer crossover switching

• Support CEC

Others

• AMX, Crestron third party IP control support with RS-232C port

• 150mA Trigger output

• IR Remote in/out ports

Main Specifications

Power amplifier section

Rated output *THD figures are power amp stage values.

Front L/R 105 W + 105 W
(8 ohms, 20 Hz - 20 kHz, THD 0.08 %)
135 W + 135 W
(6 ohms, 1 kHz, THD 0.7%)

Centre 105 W
(8 ohms, 20 Hz - 20 kHz, THD 0.08 %)
135 W
(6 ohms, 1 kHz, THD 0.7%)

Surround L/R 105 W + 105 W
(8 ohms, 20 Hz - 20 kHz, THD 0.08 %)
135 W + 135 W
(6 ohms, 1 kHz, THD 0.7%)

Surround Back L/R 105 W + 105 W
(8 ohms, 20 Hz - 20 kHz, THD 0.08 %)
135 W + 135 W
(6 ohms, 1 kHz, THD 0.7%)

Preamplifier section

Input sensitivity/impedance
PHONO (MM) 2.5 mV
Audio inputs 200 mV / 47 kohms
Output level/Load impedance
Audio outputs 1.2 V

FM section

Tuning frequency range 87.5 - 108.0 MHz
Usable sensitivity 1.0 uV (11.2 dBf)

AM section

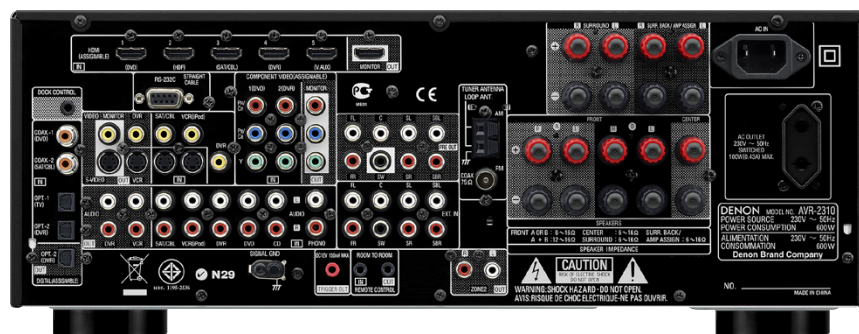
Tuning frequency range 522 - 1611 kHz
Usable sensitivity 18 uV

General

Power supply AC 230 V, 50 Hz
Power consumption 600 W (Standby 0.3 W)
Dimensions (W x H x D) 434 x 171 x 377 mm
Weight 11.2 kg

Ports

In		
HDMI		x 5
Component		x 2
S-Video		x 3
Composite (Video)		x 4
Analog Audio (Tuner included)		x 8
Analog EXT. Input		7.1ch
Digital Optical		x 3
Digital Coaxial		x 2
Out		
HDMI Monitor		x 1
Component Monitor		x 1
S-Video Monitor		x 1
S-Video (VCR)		x 1
Composite Monitor		x 1
Composite (DVR)		x 1
Analog Audio REC		x 2
Audio Preout (Zone2 / 7.1ch)		x 2
Digital Optical		x 1
Phones		x 1
Other		
Microphone Port		x 1
Dock Control Port		x 1
FM Tuner Antenna		x 1
AM Tuner Antenna		x 1
RS-232C		x 1
Remote Control In/Out		In 1 / Out 1
DC12V 150mA MAX. trigger out		x 1



*Premium silver version is also available.

*Design and specifications are subject to change without notice.
**Dolby®, "Pro Logic" and the double-D symbol are trademarks of Dolby Laboratories.
*DTS is a registered trademark and the DTS logos, Symbol, DTS-HD and DTS-HD Master Audio are trademarks of DTS, Inc.
*HDMI, the HDMI logo and High-Definition Multimedia Interface are trademarks or registered trademarks of HDMI Licensing LLC.
*NSV is a registered trademark of Analog Devices, Inc.
*Audyssey MultEQ® is a registered trademark of Audyssey Laboratories. Audyssey Dynamic EQ™ is a trademark of Audyssey Laboratories. Audyssey Dynamic Volume™ is a trademark of Audyssey Laboratories.
*Microsoft, Windows Media, Windows Vista, and Windows are either registered trademarks or trademarks of Microsoft Corporation in the United States and/or other countries.
*iPod is a trademark of Apple Inc., registered in the U.S. and other countries.