

Speakers

Ceiling, Low Impedance



CM610

CM710

CM710

Niles Multipurpose Ceiling Mount Loudspeakers

For use as primary loudspeakers in price-sensitive installations

- Integrated woofer/baffle design
- Polypropylene cone woofer with treated urethane surround
- Fluid-cooled Kaladex® tweeter
- Includes a flush-mount aluminum grille plus a special recessed cloth grille that masquerades as a light fixture
- Warranty: Limited Lifetime

Model	Impedance	Power Handling	Frequency Response	Tweeter	Woofer	Cutout Dimension	Overall Frame Dimension	Depth
CM610	8	50W	65Hz to 20kHz	3/4"	6"	165mm	197mm	92mm
CM710	8	75W	59Hz to 20kHz	3/4"	7"	205mm	235mm	92mm
CM710SI	8	75W	61Hz to 20kHz	Dual 3/4"	7"	205mm	235mm	92mm



CM630

CM730

CM730SI

CM830

Niles Performance Ceiling Mount Loudspeakers

Blending value and performance, a quality loudspeaker suitable for a variety of applications

- Integrated woofer/baffle design
- Polypropylene woofer cone with butyl rubber surround
- Fluid-cooled UltraSilk® soft-dome tweeter
- Proprietary bridge-mounted tweeter adjustment mechanism focuses the high frequency sounds in any direction up to 20-degrees
- Flush-mount MicroPerf™ aluminum grille
- Warranty: Limited Lifetime

Model	Impedance	Power Handling	Frequency Response	Tweeter	Woofer	Cutout Dimension	Overall Frame Dimension	Depth
CM630	8	75W	65Hz to 20kHz	1"	6"	165mm	197mm	92mm
CM730	8	100W	59Hz to 20kHz	1"	7"	205mm	235mm	110mm
CM730SI	8	100W	60Hz to 21kHz	Dual 1"	7"	205mm	235mm	110mm
CM830	8	125W	49Hz to 21kHz	1"	8"	240mm	270mm	110mm



DS7PR

DS7FX

DS8PR

Niles Directional Ceiling Mount Loudspeakers

Patented Directed Soundfield™ technology directs the sound to the listening area, regardless of where the loudspeakers are installed.

The perfect blend between value and performance, these loudspeakers deliver high-performance sound in a wide variety of applications.

- Integrated baffle/frame assembly
- Glass fiber woofer cone with curvilinear profile
- Fluid-cooled Teteron® dome tweeter
- Dialogue switch on direct firing models, for center channel applications
- Bipole/Dipole switch on effects model, for surround mode room matching
- Tweeter level switch
- Weather-resistant construction

Model	Impedance	Power Handling	Frequency Response	Tweeter	Woofer	Cutout Dimension	Overall Frame Dimension	Depth
DS7PR	8	130W	52Hz to 21kHz	1"	7"	216mm	252mm	136mm
DS8PR	8	140W	48Hz to 21kHz	1"	8"	248mm	283mm	136mm
DS7FX	8	140W	52Hz to 21kHz	Dual 1"	7"	216mm	252mm	136mm

Speakers

Ceiling, High Impedance

TOA PC648R/PC658R

- Entry level 100 volt line ceiling speakers
- Spring clamp mechanism for easy speaker mounting to the ceiling
- PP Resin frame and metal mesh grille



	Impedance	Power Handling	Sensitivity (1W/1M)	Frequency Response	Drivers	Cutout (mm)	Depth (mm)	Weight (kg)
PC648R	100 volt line	6 W	89dB	120 Hz - 18kHz	120 mm single Cone	145	70	0.465
PC658R	100 volt line	6 W	90dB	70Hz - 16kHz	150 mm single cone	170	70	0.502

TOA PC1869/PC2369/PC2869/PC2852/PC2668

- Slim line design 100 volt line speaker
- Metal frame and grille
- Spring clamp mechanism for easy speaker mounting to the ceiling
- A push-type input terminal allows easy cable connections and bridge wiring
- PC2668 – designed for surface mounting



	Impedance	Power Handling	Sensitivity (1W/1M)	Frequency Response	Drivers	Cutout (mm)	Depth (mm)	Weight (kg)
PC1869	100 volt line	6 W	90dB	55Hz - 18kHz	120 mm single cone	150	72	0.62
PC2369	100 volt line	6 W	93dB	45Hz - 20kHz	150 mm twin cone	200	79	0.76
PC2869	100 volt line	6 W	94dB	40Hz - 20kHz	200 mm twin cone	250	92	1.4
PC2852	100 volt line	15 W	96dB	45Hz - 20kHz	200 mm with coaxially tweeter	250	92	1.6
PC2668	100 volt line	6 W	90dB	100Hz - 16kHz	120 mm single cone	N/A	92.5	0.82

TOA CM760/CM960

- 6 watt 100 volt line ceiling speaker
- Rectangular housing is held in place by CP77 grille
- Ideally suited to mini strip and pressed metal ceilings
- CP77/CP97 grille sold separately



	Impedance	Power Handling	Sensitivity (1W/1M)	Frequency Response	Drivers	Cutout (mm)	Depth (mm)	Weight (kg)
CM760	100 volt line	6 W	90dB	100Hz - 16kHz	120 mm single cone	150	89	0.63
CM960	100 volt line	6 W	92dB	100Hz - 12kHz	160 mm twin cone	200	106.5	0.85

Speakers

Ceiling, Switchable High/Low Impedance



F2352SC



F1522SC



F2322C / F2352C



F2852C

TOA F1522SC/F2352SC/F2322C/F2352C/F2852C

- Wide dispersion (up to 170 degrees)
- Enables even coverage in large areas with fewer speakers than conventional design
- Front baffle adjustment for impedance and power tap selections
- Clamp type mounting for easy installation

Optional Accessories for the F Series Ceiling Speakers

HYBC1	Hanging Back Can for F2352SC, F2322C and F2352C
HYTR1	Trim Ring for Retrofitting to Existing Holes over 200mm
HYTB1	Tile Bar Bridge
HYAH1	Anchor Hanging Bracket

	Impedance	Power Handling (100V/8 ohm)	Sensitivity (1W/1M)	Frequency Response	Dispersion	Drivers	Cutout (mm)	Depth (mm)	Weight (kg)
F1522SC	100 volt line, 8 or 16 ohm	6W/9W	88dB	65 Hz - 18kHz	160 degrees	100 mm wide range	135	117	1
F2352SC	100 volt line, 8 or 16 ohm	6W/9W	89dB	80 Hz - 20kHz	155 degrees	120 mm and dome tweeter	200	154	1.5
F2322C	100 volt line, 8 or 16 ohm	30W/60W	90dB	70 Hz - 20kHz	170 degrees	120 mm wide range	200	200	3.7
F2352C	100 volt line, 8 or 16 ohm	30W/60W	90dB	70 Hz - 20kHz	170 degrees	120 mm and dome tweeter	200	229	3.7
F2852C	100 volt line, 8 or 16 ohm	60W/90W	91dB	60 Hz - 20kHz	120 degrees (for ceiling up to 6 metres)	160 mm and dome tweeter	250	227	5.1

Speakers

Ceiling, Switchable High/Low Impedance

Tannoy CVS Series

Medium Format Ceiling Speakers

The Tannoy CVS series has been developed to deliver the best possible performance / price balance. CVS speakers are specifically designed for applications requiring the combination of sound quality for music and speech reinforcement with reliability, intelligibility and value for money.

- Low profile coaxial in ceiling speakers
- Best in class performance to price ratio
- 100V or lowZ operation on all models
- Integral steel back cans
- Ferrofluid cooled neodymium HF driver
- Full accessory kit included in every pack - tile bridges and C-Rings
- Rapid fit clamping mechanism



CVS4



CVS4M



CVS6

Model	100V / Low Z	Sens (1W @1m)	Freq Resp (-3dB)	Freq Range (-10dB)	Dispersion (-6dB)	LF	HF	SPL Peak	Cutout (mm)	Total Depth (mm)	Weight (kg)
CVS4 micro	15W / 80 W 6 Ohms	87dB	110Hz - 19kHz	90Hz - 22kHz	90 Degrees Conical	4" mineral loaded	19mm (0.75") soft dome	109 dB	180	98.3	2
CVS4	30 W / 80 W 6 Ohms	87dB	85Hz - 19kHz	77Hz - 22kHz	90 Degrees Conical	4" mineral loaded	19mm (0.75") soft dome	109 dB	18	214	2.6
CVS6	60 W / 120 W 6 Ohms	91dB	79Hz - 21kHz	60Hz - 24kHz	90 Degrees Conical	6" mineral loaded	19mm (0.75") soft dome	115 dB	250	258	4.75
CVS8	60 W / 120 W 6 Ohms	93dB	79Hz - 21kHz	60Hz - 24kHz	90 Degrees Conical	8" mineral loaded	19mm (0.75") soft dome	117 dB	320	264	5.3

Speakers

Ceiling, Switchable High/Low Impedance



CMS401DCE



CMS501



CMS601



CMS801DC



CMS401E



CMS501DC



CMS601DC



CMS801SUB

Tannoy CMS Series

Premium Quality Discrete In-Ceiling Loudspeakers

The CMS (Ceiling Monitor System) series provides the premium audio solution for a high performance ceiling loudspeaker installation. Offering the system designer, architect and installer the very highest audio quality, intelligibility, coverage and power handling from a loudspeaker design that is extremely low profile and sympathetic to venue décor.

- Industry standard for in ceiling performance
- Optimal sonic performance, intelligibility, coverage pattern and reliability
- Class-leading Tannoy Dual Concentric™ drive unit technology
- 100V or lowZ operation on all models
- Small footprint
- Powder coated steel back can with integrated, recessed termination box
- Full accessory kit included in every pack - tile bridges and C-Rings
- Rapid fit clamping mechanism

CMS 1201DC

The CMS 1201DC is a powerful state-of-the-art large format in-ceiling loudspeaker conceived, designed and built to complement Tannoy's existing class-leading CMS range. From the pioneers of point source and large format ceiling speakers the CMS 1201DC is engineered from the ground up with superior full-range performance in mind to handle demanding distributed sound applications such as ballrooms, shopping malls, sports halls, airports and other high ceiling installations.



Model	100V / Low Z	Sensitivity (1W@1m)	Freq Resp (-3dB)	Freq Range (-10dB)	Dispersion (-6dB)	LF Driver	HF Driver	SPL Peak	Cutout (mm)	Total Depth (mm)	Weight (kg)
CMS 401E	30 W / 100 W 6 Ohms	88dB	110Hz - 22kHz	80Hz - 24kHz	90 Degrees Conical	4" mineral loaded	ICT aluminium dome	111 dB	187	147	3
CMS401 DCE	30 W / 120 W 8 Ohms	88dB	110Hz - 50kHz	80Hz - 54kHz	90 Degrees Conical	4" Dual Concentric	19mm (0.75") tit dome	112 dB	187	147	2.7
CMS501	30 W / 100 W 6 Ohms	89dB	85Hz - 22kHz	74Hz - 24kHz	90 degrees conical	5" mineral loaded	ICT aluminium dome	112 dB	190	206	3.6
CMS501 DC	30 W / 120 W 8 Ohms	89dB	85Hz - 50kHz	74Hz - 54kHz	90 degrees conical	5" Dual Concentric	19mm (0.75") tit dome	113 dB	190	206	3.9
CMS601	60 W / 120 W 6 Ohms	91dB	78Hz - 22kHz	51Hz - 24kHz	90 degrees conical	6" mineral loaded	ICT aluminium dome	112 dB	253	275	6.5
CMS601 DC	60 W / 160 W 8 Ohms	91dB	75Hz - 30kHz	50Hz - 30kHz	90 degrees conical	6.5" Dual Concentric	25mm (1.00") tit dome	116 dB	253	275	7.45
CMS801 DC	60 W / 180 W 8 Ohms	92dB	47Hz - 30kHz	40Hz - 35kHz	90 degrees conical	8" Dual Concentric	25mm (1.00") tit dome	118 dB	295	327	6.5
CMS1201DC	400 W 8 Ohms	97 dB	60Hz - 20kHz	45Hz - 30kHz	90 degrees conical	12" Dual Concentric	34mm aluminium dome	126 dB	725 x 516	331	29 (including backbox)

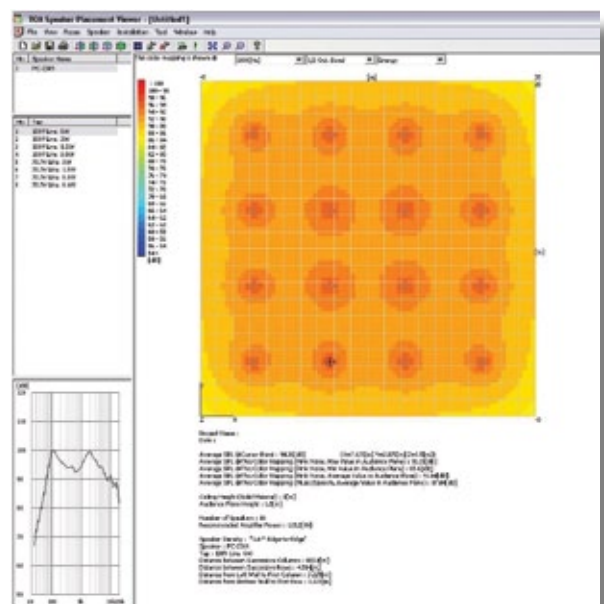
Speakers

Speaker Software

TOA Speaker Placement Software

TOA Speaker Placement Viewer is the easy way to simulate the amount of speakers necessary in a room. In addition to all TOA Public Address and ProSound speakers the latest version 2.0 includes the possibility to simulate the TOA Line Arrays as well.

- Design and layout systems in minutes!
- Automatic or manual layout modes
- Colour display of sound pressure level with adjustable resolution
- Interactive frequency response display — changes in real-time as you move the mouse through the coverage area
- Updated speaker database includes most TOA models plus generic 4", 5" and 8" ceiling speakers
- Rectangular or hexagonal layout patterns — maximum overlap, minimum overlap and edge-to-edge
- Adjust individual speakers — location, power and placement angles
- Minimum, maximum and average SPL display for both pink noise and music/speech
- Selectable frequency centres — 1/12, 1/6, 1/3, 1, 2 and 4th octave
- Print function includes colour plots and speaker locations with print preview
- More convenient features:
 - Recommended amplifier power calculation
 - Energy or interference modes
 - Normal or reverse polarity for individual speakers
 - Metric or imperial units
 - Zoom in/out and fit modes
 - Distance between columns/rows

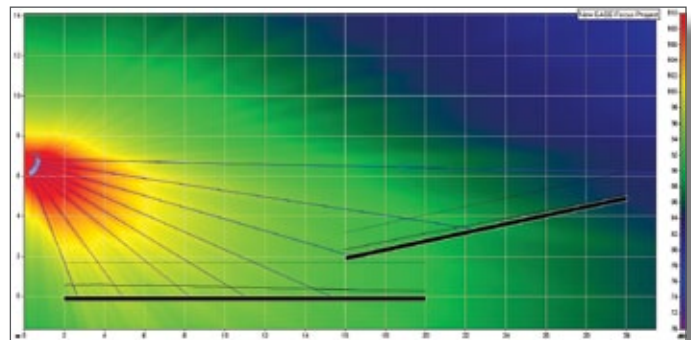


EASE Focus for TOA

EASE Focus is software that allows the modelling of acoustic sources, in particular line arrays, in two dimensions. It considers the direct field created by the complex addition of the sound contributions of individual loudspeakers or array elements. Based on an intuitive and consistent interface, EASE Focus is targeted at the end user, and the R&D engineer. The purpose of EASE Focus is to provide both, the end user, who needs to set up the array for a show, as well as the developer, with a tool that allows the easy and quick prediction of the array performance in a given venue. Developed for the Microsoft .NET platform the software offers great usability, high performance and portability.

Features

- Aiming and colour mapping display
- Zoomed rigging display
- Extended report for printing
- Levels over audience areas
- Presets for audience areas and array setup
- SPL in 1/3rd octaves, octaves, 3 octaves, broadband
- RMS, program and peak levels
- Flat and A-weighted levels
- Air attenuation according to ISO 9613
- Complex modelling of cabinets with multiple sources per cabinet
- Amplitude shading
- Optimized SPL calculation routines for interactive aiming



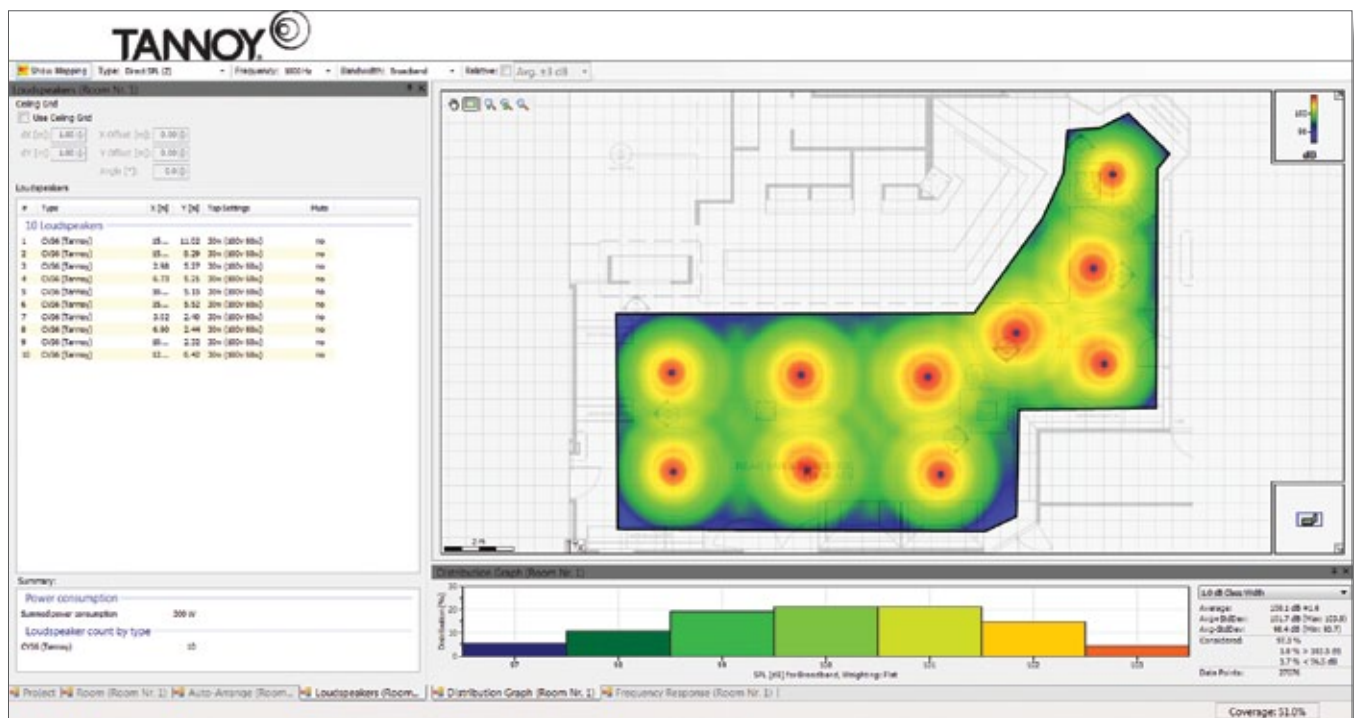
Speakers

Speaker Software

Ease Address for Tannoy

EASE Address is a design verification software package that enables system designers to accurately position, model and confirm ceiling distributed speaker systems utilising Tannoy loudspeaker products. Unlike conventional 2D ceiling speaker software, EASE Address allows for complex room shapes with varying ceiling heights. EASE Address models the direct sound output of distributed systems in two dimensions, using the acoustical calculation engine behind EASE (Enhanced Acoustic Simulator for Engineers); the industry standard for sound reinforcement modelling.

- Model Constant-Voltage or low impedance systems
- Select from a wide range of Tannoy in ceiling models
- Import floor plans to create scale drawings
- Import and export of EASE project files
- Auto-arrange option for SPL variation
- Create reports to back up your design in minutes
- Available free: ask your APG Area Manager



Speakers

Niles Multipurpose In-Wall

Niles MP5R - MP6R

For price sensitive and background music applications

- Talc-filled polypropylene cone woofer with treated foam cone surround
- Fluid-cooled Kaladex dome tweeter
- Proprietary tweeter adjustment mechanism ratchets in 1mm increments and pivots for precise aiming of high frequencies
- Flush-mount MicroPerf™ aluminum grille



MP5R



MP6R

Model	Woofer Size	Tweeter Size	Tone Controls	Frequency Response	Power Handling	Impedance	Cutout Dimension (wxh)	Overall Dimension (wxhxd)
MP5R	5.25" (133mm)	0.75" (19mm)	no	75Hz to 20kHz	60 watts	8 ohm	160mm x 230mm	180mm x 250mm x 92mm
MP6R	6.5" (165mm)	0.75" (19mm)	no	65Hz to 20kHz	75 watts	8 ohm	194mm x 270mm	222mm x 300mm x 92mm

Niles Performance In-Wall

Niles PR5R - PR6R

Superb value and performance for a wide variety of applications

- Talc-filled polypropylene cone woofer with Butyl rubber surround
- Fluid-cooled Kaladex dome tweeter
- Proprietary tweeter adjustment mechanism ratchets in 1mm increments and pivots for precise aiming of high frequencies
- Baffle-mounted bass and treble controls
- Flush-mount MicroPerf™ aluminum grille



PR5R



PR6R

Model	Woofer Size	Tweeter Size	Tone Controls	Frequency Response	Power Handling	Impedance	Cutout Dimension (wxh)	Overall Dimension (wxhxd)
PR5R	5.25" (133mm)	0.75" (19mm)	yes	70Hz to 21kHz	100 watts	8 ohm	160mm x 230mm	180mm x 250mm x 92mm
PR6R	6.5" (165mm)	0.75" (19mm)	yes	60Hz to 20kHz	100 watts	8 ohm	194mm x 270mm	222mm x 300mm x 92mm

Speakers

Tannoy In-Wall



IW4DC



IW6DC



IW62TDC



IW62TS

Tannoy In-wall Series

Many in-wall and ceiling loudspeakers are designed simply to reproduce sound without any consideration for ultimate audio quality and vocal articulation. Not so with Tannoy installation products. Tannoy speakers are monitor quality systems based on the company's expertise in the manufacture of premium quality cabinet loudspeakers and studio monitors.

- High definition Dual Concentric™ flush mount in wall speakers
- Wide, controlled constant directivity dispersion for optimum coverage
- Six way self-aligning mounting system
- Ferrofluid cooled neodymium high frequency driver
- Single or dual driver models
- Gold plated spring loaded terminals

Model	Power handling	Sens (1W @1m)	Freq Resp (-3dB)	Freq Range (-10dB)	Dispersion (-6dB)
iW4DC	120 W Ohms	88 dB	85Hz - 50kHz	74Hz - 54kHz	90 degrees conical
iW6DC	180 W 8 Ohms	91dB	75Hz - 51kHz	36Hz - 54kHz	90 degrees conical
iW62TDC	210 W 8 Ohms	92dB	70Hz - 51kHz	34Hz - 54kHz	90 degrees conical
iW62TS	400 W 8 Ohms	94dB	29Hz - 110kHz	na	na

Model	LF	HF	SPL Peak	Cutout (mm)	Total Depth (mm)	Weight (kg)
iW4DC	4" Dual Concentric	19mm (0.75") tit dome	112 dB	206 x 135	84	2.6
iW6DC	6.5" Dual Concentric	25mm (1.00") tit dome	116 dB	271.5 x 168.5	99	3
iW62TDC	6.5" Dual Concentric + 6.5" bass	25mm (1.00") tit dome	118 dB	426 x 187.6	99	5
iW62TS	2 x 6.5" long throw woofers	na	123 dB	426 x 187.6	96	6.5

Speakers

Pendant and Projector

TOA PE64/PE304 Pendant Speakers

TOA PJ64/PJ304 Projection speakers

- Repaintable enclosure designed to mimic the look of a light fitting
- Sturdy cable extendable up to 5 meters with the pendant models
- Adjustable wall bracket for the projector models
- 100 volt line with an 8 ohm option on the PE and PJ 304



	Colour	Impedance	Power Handling	Sensitivity (1W/1M)	Frequency Response	Drivers	Dimensions (mm)	Weight (Kg)
PE64	White	100 volt line	6 W	90 dB	100 Hz - 18 kHz	120 mm	ø186 × 251(H)	1.5
PE304	White	100 volt line or 8 ohm	30 W	91 dB	70 Hz - 20 kHz	Low Freq; 120 mm,	ø186 × 251(H)	2.1
PJ64	White	100 volt line	6 W	90 dB	100 Hz - 18 kHz	120 mm	ø186 × 369(H)	1.5
PJ304	White	100 volt line or 8 ohm	30 W	91 dB	70 Hz - 20 kHz	Low Freq; 120 mm,	ø186 × 369(H)	2.1

Tannoy OCV6/OCV8

OCV Series pendant loudspeakers deliver the renowned acoustic performance and exceptional value of Tannoy's CVS Series in-ceiling products in an architecturally sensitive, self-contained, lightweight cylindrical enclosure. Engineered specifically for applications where consistent and high quality audio coverage is required in high or open-ceilinged spaces – such as transport terminus, shopping malls or large double or triple height commercial floors – without compromising clarity, intelligibility and SPL.

- Coaxial pendant loudspeakers
- Lightweight self-contained enclosure
- 100V or lowZ operation on all models
- Architecturally sensitive cylindrical form factor for minimal spatial impact
- Quick and easy hanging system
- Easily accessible tapping switch on top of enclosure
- IP54 Rated for water and dust



Model	Dispersion (-6dB)	LF	HF	SPL Peak	Bezel diameter	Total Depth (mm)	Weight (kg)	100V / Low Z	Sens (1W @1m)	Freq Resp (-3dB)	Freq Range (-10dB)
OCV6	90 degrees conical	6" mineral loaded	19mm (0.75") soft dome	111 dB	260	423	5.9	60 W / 120 W 16 Ohms	88dB	80Hz - 20kHz	60Hz - 30kHz
OCV8	80 degrees conical	8" mineral loaded	25mm (1") soft dome	114 dB	302	292	7.8	60 W / 140 W 16 Ohms	90 dB	80Hz - 20kHz	50Hz - 30kHz

Speakers

Cabinet



TOA BS633A/AT

- 6 watt 100 volt line plastic box speaker
- 120mm single cone driver
- Available with side mounted attenuator (BS633AT)



TOA BS634T

- 6 watt 100 volt line slim box speaker
- 150mm twin cone driver
- Screw attenuator adjustment



BS678T



BS678B



BS678BT

TOA BS678 (T/B/BT)

- 6 watt 100 volt line box speaker
- 150mm twin cone driver
- Available with side mounted attenuator (BS678T, BS678BT)
- Available in black or white



TOA BS1030 (B/W)

- 30 watt two way box speaker
- 100 mm bass driver and 25 mm dome tweeter
- 100 volt line or low impedance
- Comes with a "U" type bracket
- Available in either black (BS1030B) or white (BS1030W).



TOA BS301

- Subwoofer/Satellite speaker system
- 1 x subwoofer with 2 x 150 mm internal bass drivers
- 4 x satellites with 75mm wide range drivers
- All mounting brackets including subwoofer wall/ceiling brackets
- 120 watts continuous program at 6 ohm (per channel stereo)

Speakers

Cabinet

TOA F1000/F1300/F2000

- Designed to provide high quality sound and reliable performance for restaurants, retail and audio/visual applications
- Two-way bass-reflex design with high impact polystyrene enclosure
- 100, 130 or 200 mm low frequency driver plus dome tweeter
- F2000 comes with an adaptor to reduce the dispersion angle of the tweeter
- Switchable 100 volt line or low impedance, black or white, weather resistant version available (100 volt line only)
- All models include a versatile wall/ceiling-mount bracket for easy installation



HYCM10 (B/W)	Ceiling Mount Bracket for F1000/F1300 (black or white)
HYCL10B	Cluster bracket F1000/F1300
YS60B	Pole Mount Bracket F1000/F1300
HYBH10B	Board hanging Bracket F1000/F1300
HYCM20 (B/W)	Ceiling Mount Bracket F2000 (black or white)
HYCL20B	Cluster bracket F2000
YS60B + SP131	Pole Mount Bracket & adaptor

	Colour	Impedance	Power Handling 100V/8 ohm Program)	Sensitivity (1W/1M)	Frequency Response	Dispersion Angle	Drivers (low/ high)	Dimensions (mm)	Weight (kg)
F1000BT	Black	100 volt line or 8 ohm	15W/90W	87 dB	85Hz - 20kHz	90 deg. x 90 deg.	100mm/Dome Tweeter	130 (W) x 202 (H) x 131 (D)	2
F1000WT	White	100 volt line or 8 ohm	15W/90W	87 dB	85Hz - 20kHz	90 deg. x 90 deg.	100mm/Dome Tweeter	130 (W) x 202 (H) x 131 (D)	2
F1000BTWP	Black	100 volt line	15W/90W	87 dB	85Hz - 20kHz	90 deg. x 90 deg.	100mm/Dome Tweeter	130 (W) x 202 (H) x 131 (D)	2
F1000WTWP	White	100 volt line	15W/90W	87 dB	85Hz - 20kHz	90 deg. x 90 deg.	100mm/Dome Tweeter	130 (W) x 202 (H) x 131 (D)	2
F1300BT	Black	100 volt line or 8 ohm	30W/150W	90 dB	80Hz - 20kHz	110 deg. X 100deg.	130mm/Dome Tweeter	162 (W) x 250 (H) x 161 (D)	3.6
F1300WT	White	100 volt line or 8 ohm	30W/150W	90 dB	80Hz - 20kHz	110 deg. X 100deg.	130mm/Dome Tweeter	162 (W) x 250 (H) x 161 (D)	3.6
F1300BTWP	Black	100 volt line	30W/150W	90 dB	80Hz - 20kHz	110 deg. X 100deg.	130mm/Dome Tweeter	162 (W) x 250 (H) x 161 (D)	3.6
F1300WTWP	White	100 volt line	30W/150W	90 dB	80Hz - 20kHz	110 deg. X 100deg.	130mm/Dome Tweeter	162 (W) x 250 (H) x 161 (D)	3.6
F2000BT	Black	100 volt line or 8 ohm	60W/180W	92 dB	65Hz - 20kHz	110 deg. X 100deg.	200mm/Dome Tweeter	244 (W) x 373 (H) x 235 (D)	7.4
F2000WT	White	100 volt line or 8 ohm	60W/180W	92 dB	65Hz - 20kHz	110 deg. X 100deg.	200mm/Dome Tweeter	244 (W) x 373 (H) x 235 (D)	7.4
F2000BTWP	Black	100 volt line	60W/180W	92 dB	65Hz - 20kHz	110 deg. X 100deg.	200mm/Dome Tweeter	244 (W) x 373 (H) x 235 (D)	7.4
F2000WTWP	White	100 volt line	60W/180W	92 dB	65Hz - 20kHz	110 deg. X 100deg.	200mm/Dome Tweeter	244 (W) x 373 (H) x 235 (D)	7.4

Speakers

Cabinet



HS1200BT



HS1500BT

TOA HS1200 (BT or WT) and HS1500 (BT or WT)

- HS Series speakers are equipped with 90° x 40° coaxial tweeter array
- This feature allows tailoring of the speaker's dispersion characteristics to better suit the acoustic environment
- Can be used with 100 volt line or low impedance applications
- Can be installed as wall or ceiling mounted units, or used as a floor monitor
- Available in black or white

TOA HS Series Mounting Accessories



HY1200VB HY1200VW HY1500HB HY1500HW
HY1500VB HY1500VW HYW0801 HYC0801

HY1200H (B or W)	Horizontal Mounting Bracket for HS1200BT - Black
HY1200V (B or W)	Vertical Mounting Bracket for HS1200BT - Black
HY1500H (B or W)	Horizontal Mounting Bracket for HS1500BT - Black
HY1500V (B or W)	Vertical Mounting Bracket for HS1500BT - Black
HYW0801	Wall Mounting Adaptor - Black
HYW0801W*	Wall Mounting Adaptor - White
HYC0801*	Ceiling Mounting Adaptor - Black
HYC0801W*	Ceiling Mounting Adaptor - White
* To Be Used With HY1200/HY1500 Series Brackets	
* B = Black version, W = White version	

	Colour	Impedance	Power Handling (100V/8 ohm Program)	Sensitivity (1W/1M)	Frequency Response	Dispersion Angle	Drivers (low/high)	Dimensions (mm)	Weight (kg)
HS1200BT	Black	100 volt line or 8 ohm	60W/300W	97 dB	70Hz - 20kHz	90 deg. X 60 deg.	300mm/6 x Coaxial Dome	361 (W) x 448 (H) x 320 (D)	10
HS1200WT	White	100 volt line or 8 ohm	60W/300W	97 dB	70Hz - 20kHz	90 deg. X 60 deg.	300mm/6 x Coaxial Dome	361 (W) x 448 (H) x 320 (D)	10
HS1500BT	Black	100 volt line or 8 ohm	60W/300W	98 dB	60Hz - 20kHz	90 deg. X 60 deg.	380mm/6 x Coaxial Dome	451 (W) x 560 (H) x 400 (D)	14
HS1500WT	White	100 volt line or 8 ohm	60W/300W	98 dB	60Hz - 20kHz	90 deg. X 60 deg.	380mm/6 x Coaxial Dome	451 (W) x 560 (H) x 400 (D)	14

Speakers

Cabinet

Peavey PV Series

Hartley Peavey founded Peavey Electronics on the principle of making high-quality, professional gear that sounds great but won't break the bank. Peavey has been honing that art since 1965, and no sound reinforcement line combines performance and value like the PV Series.

A full range of enclosures, subwoofers and monitors, the PV Series stacks up with heavy-duty loudspeakers, titanium compression drivers and impressive high-power handling. The PV 215, PV 115 and PV 112 are loaded with constant-directivity horns that produce clean highs and targeted sound coverage, and range between 400 and 700 watts program power handling.

When it's time to get the party started, PV Series subwoofers are ready to rumble. The passive PV 118 sub has an optimized internal low-pass crossover network and ranges from 40 Hz to 180 Hz with 400 watts program power handling, while the active PV 118D features a built-in class-D amp that drives an 18" woofer with 300 watts total power.

No sound-reinforcement line would be complete without monitors, and we offer three models tailored for stage duty.

Five year warranty.



	Application	Power handling (program)	Configuration	Input	Dimensions (HxWxD)
PV112	front of house, full range	400	1 x 12" plus RX14 titanium compression driver	6.35mm x 2	638mm x 402mm x 375mm; 21.3kg
PV115	front of house, full range	400	1 x 15" plus RX14 titanium compression driver	6.35mm x 2	806mm x 467mm x 362mm; 24.1kg
PV215	front of house, full range	700	2 x 15" plus RX14 titanium compression driver	6.35mm x 2	1225mm x 467mm x 362mm; 35.9kg
PV118	subwoofer	400	1 x 18"	6.35mm x x2	686mm x 559mm x 495mm; 33.4kg
PV118D	active subwoofer	includes 300W amplifier	1 x 18" (120Hz electronic crossover)	XLR and 6.35mm	686mm x 559mm x 495mm; 36.2kg
PV12M	stage monitor	500	1 x 12" plus 14XT compression driver	6.35mm	413mm x 564mm x 318mm; 15.9kg
PV15M	stage monitor	500	1 x 15" plus 14XT compression driver	6.35mm	413mm x 529mm x 318mm; 17.7kg
PV15PM	active stage monitor	includes 200W bi-amplifier	1 x 15" plus 14XT compression driver	XLR/6.35mm combi input	413mm x 529mm x 318mm; 21.4kg

Speakers

Cabinet

Peavey PR Series

Available in passive and active (powered) versions, the PR Series delivers superior sound quality by utilising advanced materials, like the light weight, roadworthy, moulded polypropylene exteriors.

The PR family features black powder-coated steel grilles that provide driver protection and a professional appearance. These speakers can be used on the floor, be pole mounted or flown via top and bottom flying inserts. In addition, the unique Peavey Versamount facilitates wall and ceiling mounting: see photo.

Five year warranty.



	Type	Power handling (program)	Configuration	Input	Dimensions (hxwxhd)
PR10	passive	400	1 x 10" plus RX14 titanium compression driver	6.35mm x 2	495mm x 356mm x 333mm; 10.5kg
PR12	passive	400	1 x 12" plus RX14 titanium compression driver	6.35mm x 2	609mm x 463mm x 368mm; 15kg
PR15	passive	400	1 x 15" plus RX14 titanium compression driver	6.35mm x 2	736mm x 558mm x 435mm; 19.1kg
PR12D	active, with digital biampifier	200W + 70W digital amps	1 x 12" plus RX14 titanium compression driver	XLR/6.35mm combi input plus 6.35mm link input and output	609mm x 463mm x 368mm; 13kg
PR15D	active, with digital biampifier	200W + 70W digital amps	1 x 15" plus RX14 titanium compression driver	XLR/6.35mm combi input plus 6.35mm link input and output	736mm x 558mm x 435mm; 16.4kg

Speakers

Cabinet

Peavey SP Series

Peavey's reputation for reliability and innovation starts with the SP Series, and with good reason: for more than three decades, these renowned loudspeaker enclosures have been the proving ground for many of the company's enduring innovations in sound reinforcement. SP Series enclosures are built to last in the U.S.A. (supported by five year warranty) with patented and exclusive technologies that not only make your sound clear and true, but also efficient and strong.

Durable Peavey Black Widow® series loudspeakers are the centerpiece, designed with Kevlar-impregnated cones and 4" edge-wound aluminium ribbon voice coils wound on Kapton formers for high efficiency and sensitivity. With die-cast aluminium alloy frames, a vented magnet structure that allows superior cooling at high drive levels, and heavy-duty, spring-loaded terminals with industry-standards colour coding, Black Widow loudspeakers are everything you expect from a professional application loudspeaker.

Every enclosure in the SP Series features Peavey's field-replaceable speaker basket design, an exclusive feature that allows you to replace blown cones on the gig with ease. Speaker re-coning is expensive and can take weeks, but with Peavey speakers you can replace the entire cone just by removing three screws. And only Peavey speakers are made to the precise tolerances required for field replacement.

SP Series enclosures offer clarity and efficiency in the high frequency range through specially-designed two-inch RX22™ titanium diaphragm compression drivers with ferrofluid cooling. Coupled to the patented Quadratic Throat Waveguide™ these drivers provide smooth, even response, low distortion and excellent HF dispersion. The horn has an asymmetrical vertical polar response, so it aims the sound directly at the audience members and minimises ceiling reflections for clarity and gain before feedback.



	type	power handling (program)	configuration	Input	dimensions (hwxwd)
SP2	front of house, full range	1,000W	1 x 15" plus RX22 compression driver	Speakon plus 6.35mm; can be biamplified	781mm x 527mm x 585mm; 33kg
SP3	front of house, full range	1,200W	three way: 1 x 15", 1 x 6.5" with phase plug and 1 x RX22 compression driver	Speakon plus 6.35mm; can be biamplified	879mm x 527mm x 587mm; 38kg
SP4	front of house, full range	2,000W	2 x 15" plus RX14 titanium compression driver	Speakon plus 6.35mm; can be biamplified	1245mm x 527mm x 588mm; 52kg
SP5	front of house, full range	800W	1 x 15" plus RX22 compression driver	Speakon plus 6.35mm	696mm x 527mm x 419mm; 26kg
SP118	sub-woofer	1,200W	1 x 18"	Speakon plus 6.35mm	781mm x 531mm x 743mm; 39kg
SP218	sub-woofer	2,400W	2 x 18"	Speakon plus 6.35mm	1080mm x 550mm x 753mm; 56kg
SP12M	stage monitor	1,000W	1 x 12" plus RX22 compression driver	Speakon plus 6.35mm	388mm x 575mm x 451mm; 21kg
SP15M	stage monitor	1,000W	1 x 15" plus RX22 compression driver	Speakon plus 6.35mm	388mm x 616mm x 464mm; 22kg

Speakers

Cabinet



DVS6TW

Tannoy DVS SERIES

STYLISH SURFACE MOUNT LOUDSPEAKERS
 Designed for a wide variety of discrete small scale sound reinforcement applications, DVS Series is an ultra-compact surface mount loudspeaker of exceptional value and acoustic performance, designed for commercial, professional and residential applications where environmental durability and high quality sound reproduction are required. DVS Series products are rated IP64.

- Cost effective coaxial surface mount speakers
- Entry level into a premium brand
- Stylish, compact IP64 enclosures
- 100V or lowZ operation
- Yoke brackets included
- Available in black or white



DVS4TB

Model	100V / Low Z	Sens (1W @1m)	Freq Resp (-3dB)	Freq Range (-10dB)	Dispersion (-6dB)	LF	HF	SPL Peak	Enclosure	Dimesions (hxxwxd)	Weight each (kg)
DVS4T	30 W / 80 W 6 Ohms	84 dB	90Hz - 20kHz	75Hz - 30kHz	110 degrees conical	4" mineral loaded	20mm (0.79") soft dome	106 dB	ABS	277 x 170 x 165	2.3
DVS6T	60 W / 120 W 6 Ohms	88 dB	80Hz - 20kHz	65Hz - 30kHz	90 degrees conical	6.5" mineral loaded	20mm (0.79") soft dome	111 dB	ABS	340 x 212 x 216	4.1
DVS8T	60 W / 140 W 6 Ohms	90 dB	75Hz - 20kHz	60Hz - 30kHz	80 degrees conical	6.5" mineral loaded	20mm (0.79") soft dome	114 dB	ABS	451 x 290 x 296	6.3

Speakers

Cabinet

Tannoy DI SERIES

ALL WEATHER / GENERAL PURPOSE SURFACE MOUNT

The Tannoy Di Range is a high performance, ultra compact, full bandwidth series of passive surface mount loudspeakers. They are fully optimised for indoor or outdoor use in professional or residential applications where environment durability and high quality sonic performance are required. All the passive models in the range are weather resistant; rated IP64 to EN60529.

- High definition Dual Concentric™ surface mount speakers
- Stylish, compact, IP64 enclosure
- Choose between low Z or switchable 100V / low Z versions
- Yoke brackets included
- Available in black or white

Tannoy DI ACTIVE POWERED SURFACE MOUNT

The Tannoy Di5a is a high performance, ultra compact, full bandwidth surface mount loudspeaker; optimised for indoor use in professional or residential applications where high quality sonic performance is essential.



Model	100V / Low Z	Sens (1W @1m)	Freq Resp (-3dB)	Freq Range (-10dB)	Dispersion (-6dB)	LF	HF	SPL Peak	Enclosure	Dimesions (hxxwxd)	Weight each (kg)
DI5A	Integrated 30W RMS	na	100Hz - 25kHz	90Hz - 30kHz	90 degrees conical	4.5" mineral loaded	ICT aluminium dome	109 dB	HIPS	240 x 155 x 162	2.4
DI5DC / DI5DCT	30 W (T model only) / 120 W 8 Ohms	88dB	90Hz - 50kHz	80Hz - 54kHz	90 degrees conical	4.5" Dual Concentric	19mm titanium dome	112 dB	HIPS	241 x 155 x 162	2.7
DI6DC / DI6DCT	60 W (T model only) / 180 W 8 Ohms	89dB	75Hz - 30kHz	55Hz - 35kHz	90 degrees conical	6.5" Dual Concentric	25mm (1") titanium dome	115 dB	HIPS	357 x 230 x 223	5.5
DI8DC / DI8DCT	60 W (T model only) / 180 W 8 Ohms	91dB	65Hz - 30kHz	53Hz - 35kHz	90 degrees conical	8" Dual Concentric	25mm (1") titanium dome	117 dB	HIPS	404 x 260 x 260	7

Speakers

Cabinet

Speakers



Tannoy VX SERIES

Passive Sound Reinforcement Loudspeaker Range

Conceived, engineered and built with precision in the United Kingdom, the VX Series represents the latest evolution of Tannoy's core philosophies in professional loudspeaker design. There are 10 passive models in the range, combining next-generation Dual Concentric™ driver technology with smart, ergonomic, portable and install-friendly cabinet designs.

- Full range passive installation / transportable loudspeaker
- Latest generation of Tannoy's acclaimed Dual Concentric driver
- Range now includes versatile dual driver models
- Innovative rotatable Q-Centric Waveguide
- Redesigned ergonomic enclosures
- Premium acoustic performance
- Engineered and handcrafted in the UK
- Weatherised versions available on special order

Model	Power handling	Sensitivity	Freq Resp (-3dB)	Freq Range (-10dB)	Dispersion (-6dB)	Driver	SPL Peak	Enclosure	Dimesions (hwxwd)
VX5.2	260 W 8 Ohms	90dB	87 Hz - 35 kHz	65 Hz - 45 kHz	120 x 90	1 x 5" Dual Concentric™ and 1 x 5" bass driver	117 dB	6.7 litre birch plywood	333 x 180 x 200
VX6	200 W 8 Ohms	91dB	80 Hz - 45 kHz	65 Hz - 45 kHz	90 degrees conical	"6"" Dual Concentric"	116 dB	9.2 litre birch plywood	333 x 225 x 215
VX8	260 W 8 Ohms	92dB	85 Hz - 35 kHz	62 Hz - 45 kHz	90 degrees conical	"8"" Dual Concentric"	119 dB	16.3 litre, 15 mm birch plywood	388 x 280 x 275
VX8.2	400 W 8 Ohms	93dB	80 Hz - 35 kHz	60 Hz - 45 kHz	90 degrees conical	1 x 8" Dual Concentric™ and 1 x 8" bass driver	122 dB	25.3 litre, 15 mm birch plywood	590 x 280 x 275
VX12	400 W 8 Ohms	97dB	70 Hz - 25 kHz	55 Hz - 38 kHz	90 degrees conical	12" Dual Concentric	126 dB	36.4 litre, 18 mm birch plywood	490 x 370 x 380
VX12Q	700 W 8 Ohms	97dB	80 Hz - 25 kHz	60 Hz - 30 kHz	75 x 40	12" PowerDual™	130 dB	36.4 litre, 18 mm birch plywood	491 x 370 x 380
VX12.2	1000 W 8 Ohms	99dB	70 Hz - 25 kHz	55 Hz - 38 kHz	75 x 40	1 x 12" PowerDual™ and 1 x 12" bass driver	132 dB	57 litre, 18 mm birch plywood	780 x 370 x 380
VX15Q	800 W 8 Ohms	99dB	70 Hz - 25 kHz	58 Hz - 30 kHz	75 x 40	15" PowerDual™	132 dB	54.9 litre, 18 mm birch plywood	590 x 450 x 420

Speakers

Cabinet

Tannoy VXP SERIES

LAB.GRUPPEN POWERED SOUND REINFORCEMENT LOUDSPEAKERS

VXP Series combines the class-leading performance of the passive VX Series with Lab.gruppen's latest green star rated Integrated IntelliDrive Energy Efficient Amplifier module, bringing ultra reliable and perfectly matched power to the equation for audible superiority in a self-powered box.

- Full range powered installation / transportable loudspeaker
- Integrated Lab.gruppen IDEEA amplifier module
- Latest generation of Tannoy's acclaimed Dual Concentric driver
- Range now includes versatile dual driver models
- Innovative rotatable Q-Centric Waveguide
- Redesigned ergonomic enclosures
- Premium acoustic performance
- Engineered and handcrafted in the UK
- Weatherised versions available on special order



Model	Freq Resp (-3dB)	Freq Range (-10dB)	Dispersion (-6dB)	Driver	SPL Peak	Amplifier type	Enclosure	Dimesions (hxwx d)
VXP6	85Hz - 35kHz	75Hz - 30kHz	90 degrees conical	6" Dual Concentric	116 dB	Integrated Lab gruppen IDEEA	9.2 litre birch plywood	333 x 225 x 215
VXP8	85Hz - 22kHz	62Hz - 30kHz	90 degrees conical	8" Dual Concentric	119 dB	Integrated Lab gruppen IDEEA	16.3 litre, 15 mm birch plywood	388 x 280 x 275
VXP8.2	85Hz - 22kHz	62Hz - 30kHz	90 degrees conical	1 x 8" Dual Concentric™ and 1 x 8" bass driver	122 dB	Integrated Lab gruppen IDEEA	25.3 litre, 15 mm birch plywood	590 x 280 x 275
VXP12	70Hz - 25kHz	55Hz - 38kHz	90 degrees conical	12" Dual Concentric	126 dB	Integrated Lab gruppen IDEEA	36.4 litre, 18 mm birch plywood	490 x 370 x 380
VXP12Q	80Hz - 25kHz	60Hz - 30kHz	75 x 40	12" PowerDual™	130 dB	Integrated Lab gruppen IDEEA	36.4 litre, 18 mm birch plywood	490 x 370 x 380
VXP12.2	80Hz - 25kHz	60Hz - 30kHz	75 x 40	1 x 12" PowerDual™ and 1 x 12" bass driver	132 dB	Integrated Lab gruppen IDEEA	57 litre, 18 mm birch plywood	780 x 370 x 380
VXP15Q	70Hz - 25kHz	58Hz - 30kHz	75 x 40	15" PowerDual™	132 dB	Integrated Lab gruppen IDEEA	54.9 litre, 18 mm birch plywood	590 x 450 x 420

Speakers

Cabinet

Tannoy VQ SERIES

PASSIVE SOUND REINFORCEMENT SPEAKERS

Industry leading pattern control and sensitivity are just the tip of the iceberg with VQ. Hifi sound at concert volumes is the real story. These systems just need to be heard to be believed. Infinitely modular and powerful, these audiophile PA building blocks can be scaled to offer precise sound coverage of virtually any venue. Extremely cost effective, especially when compared to a line array solution, VQ is a designer's dream....ask us for a demo.

- High definition and clarity at high SPL's
- Class leading pattern control
- Choose from a wide range of dispersion patterns
- Build modular arrays to suit any venue layout
- Significantly more cost effective than a line array solution
- Ultra low distortion figures
- Engineered and handcrafted in the UK
- Weatherised versions available on special order



VQ60



VQ60



VQ85DF



VQ95MH



VQMB

Model	Sens LF (1W @1m)	Sens M/HF	Freq Range (-10dB)	Dispersion (-6dB)	LF	HF	SPL Peak	Enclosure	Dimesions (HxWxD)	Weight each (kg)
VQ60	105dB	115dB	90Hz - 27kHz	60 degrees conical	2 x 12"	Dual Conentric Comp Driver	144 dB	18mm birch ply	925 x 694 x 515	77
VQ100	105dB	110dB	90Hz - 27kHz	100 degrees conical	2 x 12"	Dual Conentric Comp Driver	140 dB	18mm birch ply	926 x 694 x 515	78
VQ85DF *	na	110dB	350Hz - 27kHz	80 x 50	na	Dual Conentric Comp Driver	139 dB	18mm birch ply	500 x 694 x 515	28
VQ95MH *	na	111dB	350Hz - 27kHz	90 x 50	na	Dual Conentric Comp Driver	140 dB	18mm birch ply	510 x 694 x 515	35
VQMB	105dB	na	90Hz - 600Hz	na	2 x 12"	na	141 dB	18mm birch ply	433 x 694 x 515	37
VS15 DR	100dB	na	38Hz - 4500Hz	na	15" Bass	na	136 dB	18mm birch ply	510 x 694 x 515	33

* Also available in 60 x 40 and 40 x 40 patterns

Active versions of all VQ models are also available

Speakers

Cabinet

Tannoy VQ LIVE

Active, Dsp And Road-Ready Live Sound Reinforcement

VQ LIVE offers significant and tangible benefits over many existing live sound systems: sonic superiority, fewer boxes required, lower costs and full VNET implementation (allowing system setup and ongoing venue network control). VQ LIVE has the potential to be a true line array killer!



VQ NET 60 LIVE is a 60 degree, full range self powered system with 'easy-lock' wheel-board ('dolly') for easy transit on/off site as well as refined ergonomic handle grips. The cabinet design allows for side-by-side rigging and flying with the dedicated hardware (optional). Each VQ Net LIVE 60 also comes with protective covers, LINE-X™ protective coating and water treated transducers, making it ideal for use in outdoor gigs.

The VQNETLIVE218 is a direct radiating dual 18" subwoofer cabinet designed to partner Tannoy's VQ LIVE full range touring loudspeakers, the VNET 218DR LIVE is perfect for applications where increased headroom is required for high definition sound reinforcement at low and ultra low frequencies.

Tannoy Subs

VS SUBWOOFERS

Passive subwoofer enclosures designed to partner V / VX and VQ series, these high efficiency, high power handling, passive subwoofer enclosures deliver deep, powerful bass and high sound pressure levels at low and ultra low frequencies.



VS218DR

POWER VS SUBS

Active subwoofer enclosures designed to extend the low frequency range of any system, this series of high powered subwoofers feature Class D amplifiers integrated within the enclosure, especially suited to extend the low frequency response of Tannoy's VXP series loudspeakers and increase system headroom



VS15HL



VS10BP

VNET SUBWOOFERS

These high performance active network enabled subwoofer enclosures incorporate a DSP section in conjunction with efficient switched mode power supply Class D power modules; these subwoofer enclosures can be networked with QFlex arrays or VNET enclosures to create a powerful extended bandwidth musical system.

Model	Power Handling	Frequency Response (-3dB)	Frequency Range (-10dB)	Sensitivity (1W @1m)	LF Driver	SPL Peak	Enclosure	Dimesions (hxxwxd)	Weight each (kg)
VS10 BP	400 W 8 Ohms	39Hz - 110Hz	35Hz - 130Hz	95dB	1 x 10" high excursion bass driver	124 dB	50 litres bandpass 15mm MDF	355 x 385 x 590	17.5
VS15 BP	600 W 8 Ohms	47Hz - 160Hz	37Hz - 200Hz	99dB	1 x 15" high excursion bass driver	130 dB	100 litre Bandpass, 15mm birch plywood	665 x 440 x 440	27
VS15 HL	800 W 8 Ohms	60Hz - 300Hz	55Hz - 400Hz	104dB	1 x 15" high excursion bass driver	136 dB	170 litres 18mm birch plywood	578 x 555 x 650	40
VS18 DR	1200 W 8 Ohms	29Hz - 1kHz	24Hz - 1.5kHz	102dB	1 x 18" high excursion bass driver	136 dB	202 litres 18mm birch plywood	710 x 652 x 555	50
VS215 HL	2 x 2000 W 8 Ohms	48Hz - 350Hz	40Hz - 450Hz	109dB	2 x 15" high excursion bass driver	148 dB	500 litres, 18mm birch plywood	700 x 1050 x 850	107
VS218 DR	2 x 2000 W 8 Ohms	31Hz - 600Hz	24Hz - 1.5kHz	106dB	2 x 18" high excursion bass driver	145 dB	500 litres, 18mm birch plywood	700 x 1050 x 850	105

Active versions of all subwoofers are also available

Speakers

Column/Array

Speakers



TOA HX5B/W Compact Line Array

- Variable dispersion speaker with four adjustable modules
- Each set of four modules can be set at 15, 30, 45 or 60 degrees dispersion
- Ideal for multipurpose school halls, houses of worship, function centres, etc
- Multiple HX5's can be joined together for larger installations
- Optional FB120 subwoofer can be used if required
- Wide range of mounting hardware including the MT200 200 watt 100 volt line transformer
- Free EASE Focus aiming software available
- Weather resistant (WP) version available



MT200

TOA HX5 Mounting Accessories	
HYPF1 (B, W or WP)	Rigging Frame - for up to four HX5's and one FB120 Subwoofer
HYCW1 (B, W or WP)	Ceiling Mount Bracket
HYCN1 (B, W or WP)	Extension Bracket - for Joining up to two HX5's
HYST1	Speaker Stand Adaptor - Mounts on a 32mm Pole Mount
HYWM1 (B, W or WP)	Wall Mounting Bracket - up to 20 deg. Vertical Tilt
HYWM2 (B, W or WP)	Wall Mounting Bracket - Allows Flush Mounting of Cabinet to Wall or Ceiling
MT200	200 watt 100 volt Line Matching Transformer

* B = Black version, W = White version, WP = Weather Resistant version

	Enclosure	Impedance	Power Handling	Sens (1W/1M)	Frequency Response	Dispersion Angle	Drivers (low/high)	Dimensions (mm)	IP Rating	Weight (kg)
HX5(B/W)	Bass Reflex	8 ohm	600 W (cont. program)	96dB (60° mode) 97dB (45° mode) 98dB (30° mode) 99dB (15° mode)	70 Hz – 20,000Hz (60° mode) 75 Hz – 20,000Hz (45° mode) 80Hz – 20,000Hz (30° mode) 85Hz – 20,000Hz (15° mode)	15, 30, 45, 60 deg x 100 deg	5 x 120 mm/12 x dome tweeters	408 (W) x 546 (H) x 342 (D)		16
HX5(BWP/WWP)	Sealed	8 ohm	600 W (cont. program)	96dB (60° mode) 97dB (45° mode) 98dB (30° mode) 99dB (15° mode)	95Hz – 20,000Hz (60° mode) 100 Hz – 20,000Hz (45° mode) 105 Hz – 20,000Hz (30° mode) 110 Hz – 20,000Hz (15° mode)	15, 30, 45, 60 deg x 100 deg	5 x 120 mm/12 x dome tweeters	408 (W) x 546 (H) x 342 (D)	IPX4	16
FB120 (B/W)	Sealed	8 ohm	600 W (cont. program)	96dB	40 Hz - 1,2000 Hz	N/A	1 x 300 mm	408 (W) x 408 (W) x 450 (D)		15

* B = Black version, W = White version, WP = Weather Resistant version

Speakers

Column/Array

TOA Type H Column Line Array

Column line array available in long or short models either, straight or with a 20 degree bottom curve

Multiple 70mm wide range drivers provide narrow dispersion and constant SPL levels

Bass reflex slim-line design (84mm wide)

Mounting options include wall mount, pan/tilt, flying and pole mount options

Two straight models can be joined for larger rooms

FB120 (B/W) sub-woofer can be used if required.

Free EASE Focus aiming software is also available



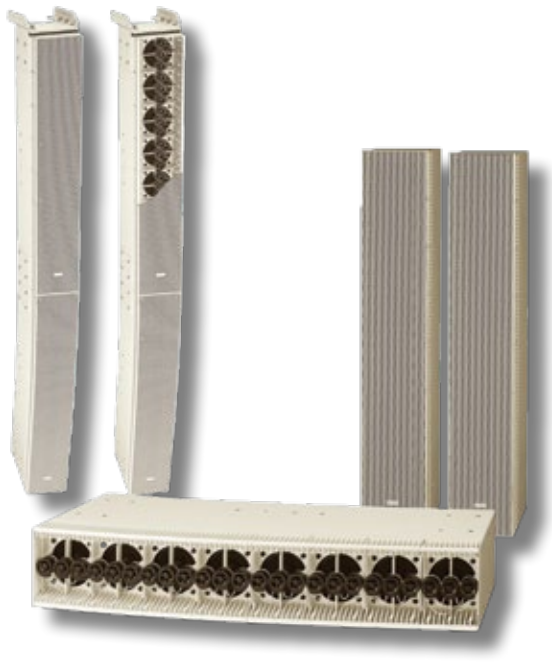
Type H Column Line Array Accessories	
SREP3	Extension Plate for Joining Two Straight Type H Line Arrays
SRWB3	Wall Mounting Bracket for Type H Line Arrays
SRTB3	Wall Tilt Bracket for Type H Line Arrays
SRFB3	Flying Bracket for Type H line Arrays
SRSA3	Stand Mount Adaptor for Type H Line Arrays
MTS0301	30 Watt 100 Volt Line Transformer for Type H Line Arrays



	Colour	Enclosure	Impedance	Power Handling	Sensitivity (1W/1M)	Frequency Response	Dispersion Angle	Drivers	Dimensions (mm)	Weight (kg)
SRH2L	White	Bass Reflex	8 ohm	180 W (cont. program)	92 dB	80 Hz - 18 kHz	90 deg. horiz. 0 deg. vert.	9 x 70 mm	84 (W) x 668.4 (H) x 115 (D)	4.4
SRH2S	White	Bass Reflex	8 ohm	180 W (cont. program)	90 dB	90 Hz - 17 kHz	90 deg. horiz. 20 deg. vert.	9 x 70 mm	84 (W) x 663.4 (H) x 115 (D)	4.2
SRH3L	White	Bass Reflex	8 ohm	360 W (cont. program)	95 dB	110 Hz - 18 kHz	90 deg. horiz. 0 deg. vert.	16 x 70 mm	84 (W) x 1186 (H) x 115 (D)	7.6
SRH3S	White	Bass Reflex	8 ohm	360 W (cont. program)	92 dB	90 Hz - 17 kHz	90 deg. horiz. 20 deg. vert.	16 x 70 mm	84 (W) x 1177.2 (H) x 157 (D)	7.9

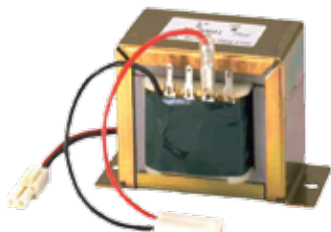
Speakers

Column/Array



TOA Type S Column Line Arrays

- Two-way bass reflex column line array available as either straight or curved design
- Each unit contains 32 speaker elements (eight bass/mid drivers and 24 dome tweeters)
- Multiple units can be joined for larger venues
- Also available in sealed weather resistant version
- Mounting options include wall mount, pan/tilt, flying and pole mount options
- FB120 (B/W) sub-woofer can be used if required.
- Free EASE Focus aiming software is also available



MTS0601

Type S Column Line Array Mounting Accessories	
SREP4	Extension plate - indoor use for Type S Line Array
SRFB4	Flying bracket - indoor use for Type S Line Array
SRWB4	Wall mount bracket - indoor use for Type S Line Array
SREP4WP	Extension plate - outdoor use for Type S Line Array
SRWB4WP	Wall mount bracket - outdoor use for Type S Line Array
SRTB4	Wall tilt bracket - indoor use for Type S Line Array
SRTB4WP	Wall tilt bracket - outdoor use for Type S Line Array
SRSA4	Stand adaptor - indoor use for Type S Line Array
SRFS4	Floor stand - indoor use for Type S Line Array
SRRP4	Protection pad for Type S Line Array
MTS0601	60 watt 100 volt Line matching transformer

	Enclosure	Impedance	Power Handling	Sens (1W/1M)	Frequency Response	Dispersion Angle	Drivers (low/high)	Dimensions (mm)	IP Rating	Weight (kg)
SRS4L	Bass Reflex	8 ohm	600 W (cont program)	94 dB	70 Hz - 20 kHz	90 deg. Horiz. 0 deg. Vert.	8 x 100 mm/24 x Dome Tweeter	160 (W) x 895 (H) x 255 (D)	-	16
SRS4S	Bass Reflex	8 ohm	600 W (cont program)	93 dB	70 Hz - 20 kHz	90 deg. Horiz. 10 deg. Vert.	8 x 100 mm/24 x Dome Tweeter	160 (W) x 892 (H) x 303 (D)	-	16
SRS4LWP	Sealed	8 ohm	600 W (cont program)	94 dB	70 Hz - 20 kHz	90 deg. Horiz. 0 deg. Vert.	8 x 100 mm/24 x Dome Tweeter	160 (W) x 895 (H) x 255 (D)	IPX4	16
SRS4SWP	Sealed	8 ohm	600 W (cont program)	93 dB	70 Hz - 20 kHz	90 deg. Horiz. 10 deg. Vert.	8 x 100 mm/24 x Dome Tweeter	160 (W) x 892 (H) x 303 (D)	!PX4	16

Speakers

Column/Array

Tannoy QFLEX

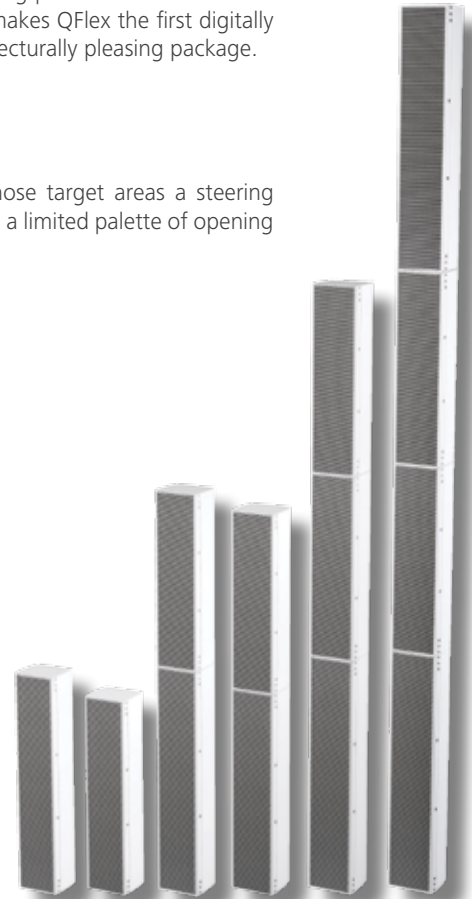
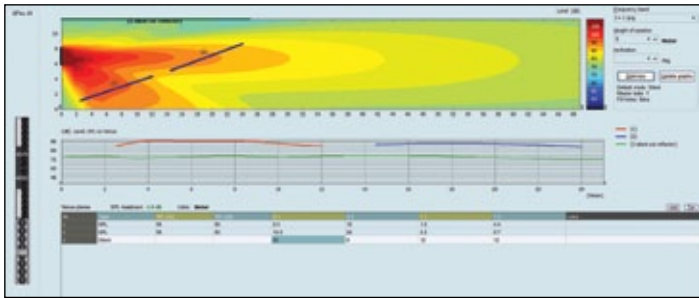
DIGITAL BEAM-STEERING ARRAY LOUDSPEAKERS

QFlex is an award winning range of digitally steerable, multi-channel, array speaker systems for the professional installation market. With state of the art algorithms and dense physical spacing of transducers, QFlex is the first product of its kind to realise full range beam steering capabilities, delivering unrivalled broadband performance for both vocal and music applications in acoustically challenging spaces such as houses of worship, transportation hubs, convention centres, conference facilities, large lecture theatres, shopping malls, performing arts centres, and museums.

QFlex is revolutionary in that it is able to achieve even coverage and SPL across the listening plane. It is able to steer the beam away from surfaces that cause reflections to frequencies beyond 12 kHz. This makes QFlex the first digitally steerable array to maintain music quality over the desired area of coverage, all in an architecturally pleasing package.

Can be ordered in custom colours by specifying RAL number.
Also available in IP53 weatherised versions.

The intuitive BeamEngine GUI allows the designer to specify target areas. Based on those target areas a steering algorithm is generated and tailored for the specific area, rather than having to choose from a limited palette of opening and steering angles.



Model	Frequency Range	Horizontal Dispersion	Vertical Dispersion	Aiming Angle Limit	LF Beam Control Limit	Maximum SPL @ 30m*	Typical Application Distance**	Column Height	4" LF drivers	3" LF drivers	1" HF drivers
QFLEX8	110Hz - 4kHz	120 degrees	Variable 10 - 100 degrees	+/- 70degrees	700Hz	92 dB	20m	840mm	8	-	-
QFLEX16	130Hz - 20kHz	120 degrees	Variable 10 - 100 degrees	+/- 70degrees	700Hz	94 dB	25m	744mm	-	8	8
QFLEX24	110Hz - 20kHz	120 degrees	Variable 10 - 100 degrees	+/- 70degrees	400Hz	96 dB	40m	1483mm	8	8	8
QFLEX32	130Hz - 20kHz	120 degrees	Variable 10 - 100 degrees	+/- 70degrees	400Hz	100 dB	50m	1387mm	-	16	16
QFLEX40	110Hz - 20kHz	120 degrees	Variable 10 - 100 degrees	+/- 70degrees	250Hz	100 dB	70m	2127mm	8	16	16
QFLEX48	110Hz - 20kHz	120 degrees	Variable 10 - 100 degrees	+/- 70degrees	200Hz	101 dB	80m	2967mm	16	16	16

* Average SPL (1kHz – 8kHz). Based on a mounting height of 10m and a target area @ 30m and 10m wide.

Maximum attainable SPL is dependant on the dimension of the target area(s). Exact figures can be derived in the BeamEngine programme.

** Based on the above venue criteria achieving 95dB SPL at the quoted distance.

Speakers

Horn Speakers



CS64



CS154



CS304

TOA CS Series Music Horns

Wide-range paging horn for voice paging, background music and tone signalling distribution

Weather-resistant to withstand demanding environmental conditions

- Constant directivity coverage (CS-154/CS-304)
- High Sensitivity: up to 98 dB (1 W/1 m)
- Moisture-resistant 120 mm speaker component (4.72")
- Built-in 100 V transformer with screwdriver-adjustable power taps
- Lightweight, sealed enclosure prevents moisture damage
- Cable strain-relief
- Polyurethane resin paint resists the fading effects of ultraviolet light
- CS154 and CS304 IP65 rated
- Wide temperature range: -20°C to +55°C
- Stainless-steel mounting bracket for easy installation and aiming in wall, pole or ceiling-mount applications
- Protective stainless-steel mesh grille prevents speaker damage

	Impedance	Power Handling	Sensitivity (1W/1M)	Freq. Response	Dimensions (mm)	Weight (kg)	IP Rating
CS64	100 volt line	6 W	96dB	130 Hz - 13 kHz	233 (W) x 224 (H) x 208 (D)	1.5	N/A
CS154	100 volt line	15 W	97dB	150 Hz - 15 kHz	366 (W) x 230 (H) x 272 (D)	2.8	65
CS304	100 volt line	30 W	98dB	120 Hz - 15 kHz	366 (W) x 230 (H) x 272 (D)	3.1	65



SC610



SC615



SC630

TOA SC Series Paging Horns

Aluminium paging horn speakers for voice paging and tone signalling distribution

- High Sensitivity: up to 113 dB (1 W/1 m)
- Usable as a microphone for intercom talk-back applications
- Built-in 100 V transformer ("M" models) with screwdriver-adjustable power tap, 8 ohm models also available
- IEC IP-65 compliant for dust and moisture-resistance
- Wide temperature range: -20°C to +55°C
- Phenolic loudspeaker diaphragm prevents deformation from heat and moisture
- Stainless-steel mounting bracket for easy installation and aiming in wall, pole or ceiling-mount applications

	Impedance	Power Handling	Sensitivity (1W/1M)	Freq. Response	Dimensions (mm)	Weight (kg)	IP Rating
SC610	8 ohm	10 W	110 dB	315 Hz - 12.5 kHz	172 (W) x 161 (H) x 188 (D)	1	65
SC610M	100 volt line	10 W	110 dB	315 Hz - 12.5 kHz	172 (W) x 161 (H) x 188 (D)	1.2	65
SC615	8 ohm	15 W	112 dB	282 Hz - 12.5 kHz	222 (W) x 179 (H) x 234 (D)	1.1	65
SC615M	100 volt line	15 W	112 dB	282 Hz - 12.5 kHz	222 (W) x 179 (H) x 234 (D)	1.3	65
SC630	8 ohm	30 W	113 dB	250 Hz - 10 kHz	285 (W) x 227 (H) x 277 (D)	1.7	65
SC630M	100 volt line	30 W	113 dB	250 Hz - 10 kHz	285 (W) x 227 (H) x 277 (D)	2	65

Speakers

Horn Speakers

TOA TC Series Paging Horns

- Aluminium paging horn speakers for voice paging and tone distribution in larger areas
- High Sensitivity (1W/1M): up to 110 dB (1 W/1 m)
- Built-in 100 V transformer ("M" models) with screwdriver-adjustable power tap, 8 ohm models also available
- IEC IP-65 compliant for dust and moisture-resistance
- Wide temperature range: -20°C to +55°C
- Phenolic loudspeaker diaphragm prevents deformation from heat and moisture.
- Stainless-steel mounting bracket for easy installation and aiming in wall, pole or ceiling-mount applications



	Impedance	Power Handling	Sensitivity (1W/1M) (1 W, 1M)	Freq. Response	Dimensions (mm)	Weight (kg)	IP Rating
TC615	8 ohm	15 W	108 dB	250 Hz - 7 kHz	400 (W) x 376 (D)	3	65
TC615M	100 volt line	15 W	108 dB	250 Hz - 7 kHz	400 (W) x 376 (D)	3.2	65
TC631	8 ohm	30 W	110 dB	200 Hz - 6 kHz	500 (W) x 463 (D)	4.1	65
TC631M	100 volt line	30 W	110 dB	200 Hz - 6 kHz	500 (W) x 463 (D)	4.5	65
TC651M	100 volt line	50 W	111 dB	200 Hz - 6 kHz	400 (W) x 376 (D)	4.0	65

TOA TH Series Horn Flares

- Aluminium flare designed to be used with the TU Series of drivers
- Ideal for paging applications in large areas such as arenas and stadiums
- High Sensitivity (1W/1M): up to 111 dB (1 W/1 m)
- Built-in 100 V transformer ("M" models) with screwdriver-adjustable power tap, 16 ohm models also available
- IEC IP-65 compliant for dust and moisture-resistance
- Wide temperature range: -20°C to +55°C
- Phenolic loudspeaker diaphragm prevents deformation from heat and moisture.



	Impedance	Power Handling	Sensitivity (1W/1M)	Freq. Response	Dimensions (mm)	Weight (kg)	IP Rating
TH650	-	-	110dB *	200 Hz - 6 kHz*	500 dia x 394 (D)	2.9	65*
TH660	-	-	110dB *	200 Hz - 6 kHz*	600 dia x 425 (D)	3.6	65*

* When a horn and driver are used together

Speakers

Horn Speakers

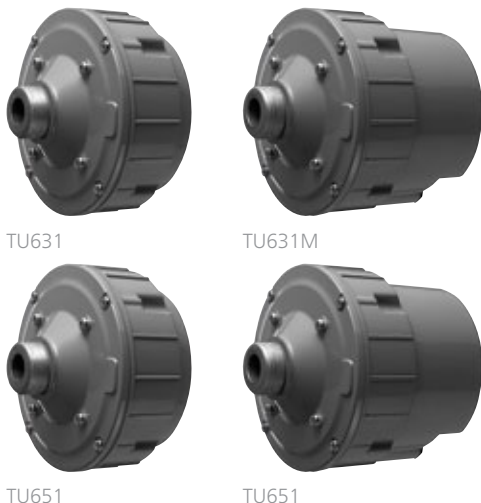


TOA DH110/DH120 Straight Horns

- Long throw straight horn designed for long distance applications
- Available as either a single throat (DH110) or twin throat (DH120) version
- Accepts either one or two TU series drivers

	Impedance	Power Handling	Sensitivity (1W/1M)	Freq. Response	Dimensions (mm)	Weight (kg)
DH110	-	-	110dB *	180 Hz - 6 kHz*	518 dia - 968 (D)*	5.3*
DH120	-	-	110dB *	180 Hz - 6 kHz*	518 dia - 884 (D)*	5.3*

* When used with a TU series driver unit



TOA's TU Series Drivers

- Driver units are designed to be used in combination with TOA's TH-650 or TH-660 round horn flares or DH straight horns.
- Ideal for paging applications in large areas such as arenas and stadiums
- Four models rated at 30 W (TU-630 and TU-630M) and 50 W (TU-650 and TU-650M).
- Built-in 100 V transformer ("M" models) with screwdriver-adjustable power taps, 16 ohm models also available
- IEC IP-65 compliant for dust and moisture-resistance
- Wide temperature range: -20°C to +55°C
- Phenolic loudspeaker diaphragm prevents deformation from heat and moisture.

	Impedance	Power Handling	Sensitivity (1W/1M)	Freq. Response	Dimensions (mm)	Weight (kg)	IP Rating
TU631	16 ohm	30 W	110dB *	200 Hz - 6 kHz*	139 dia x 106 (D)	1.4	65*
TU631M	100 volt line	30 W	110dB *	200 Hz - 6 kHz*	139 dia x 149 (D)	1.9	65*
TU651	16 ohm	50 W	110dB *	200 Hz - 6 kHz*	139 dia x 106 (D)	2.1	65*
TU651M	100 volt line	50 W	110dB *	200 Hz - 6 kHz*	139 dia x 149 (D)	2.7	65*

* When a horn and driver are used together